

structure in the late 15th or early 16th century. The church is open to the public.

### 8. The Water Mill

This 19th century watermill is remarkable because it is not fed by a river or stream but by a number of natural springs. The mill is a three storey building built of clay lump, of which few examples survive. The attached 19th century miller's house is three storeys high, but built of brick. The mill ceased working in the 1930s and its machinery is long gone. It has now been converted to residential use.

### 9. St Andrew's Church, Hingham

A big church, more than 50m long, with a huge west tower that is a landmark for miles around. It is a notable building in that it is virtually all of one construction, having been built in the later years of Remigius of Hethersett, rector here from 1319 to 1359. New windows, a clerestory to the nave and a vestry were added in the 15th century. Alterations followed in the 17th century and the Victorians carried out an enthusiastic restoration in the late 19th century. The tower is very imposing. The windows throughout the church are of great size, particularly the east window, one of the biggest in England. The church contains a huge 15th century red stone memorial to Thomas, Lord Morley and his wife and a bust of Abraham Lincoln. He himself was not from the village, but some of his ancestors lived there before emigrating two hundred years before his presidency. The church is open to the public.

M. Dennis (NLA), 8 March 2007.

# norfolk heritage explorer

This heritage trail comes from a website which documents Norfolk's 50,000 archaeological sites, finds and historical buildings. To find out more information about any of the sites mentioned in the trail or to investigate the archaeology on your doorstep go to:

[www.heritage.norfolk.gov.uk](http://www.heritage.norfolk.gov.uk)

Norfolk Historic Environment Record  
Union House  
Gressenhall  
Dereham, Norfolk, NR20 4DR

Phone: 01362 869 389  
Fax: 01362 860 951  
Email: [heritage@norfolk.gov.uk](mailto:heritage@norfolk.gov.uk)

Explore Norfolk's archaeology today  
[www.heritage.norfolk.gov.uk](http://www.heritage.norfolk.gov.uk)



If you need a leaflet in large print, audio, Braille, alternative format or in a different language please contact us on 01603 222272 or minicom 01603 223 833 and we will do our best to help.

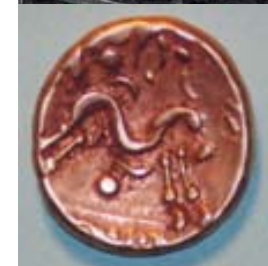
# norfolk heritage explorer

[www.heritage.norfolk.gov.uk](http://www.heritage.norfolk.gov.uk)

## Hingham, Hardingham, Hackford and Deopham Heritage Trail



Take a walk around these beautiful South Norfolk villages and discover two areas of medieval settlement, three beautiful churches and a 19th century water mill powered by natural streams.



# Hingham, Hardingham, Hackford and Deopham Heritage Trail

The walk is mostly on quiet roads and flat footpaths and is around eight miles long. The Victoria Inn at Deopham is a suitable place to stop for lunch or you could picnic at Deopham Playing Field. All sites are privately owned and not open to the public unless noted.

## 1. Medieval to post medieval mill mound at Mill Farm

A large earth mound much altered and cut about, originally built as a mill mound.

## 2. White Lodge, Hardingham Road

An early 19th century two storey yellow brick farmhouse with a modern tiled roof and overhanging eaves.

## 3. Hardingham Hall

An early to mid 18th century house with important early 19th century alterations. The house contains original plasterwork and elaborate wood panelling thought to come from the Old Hall. There is also an 18th century brick dovecote with original nesting boxes in the grounds.

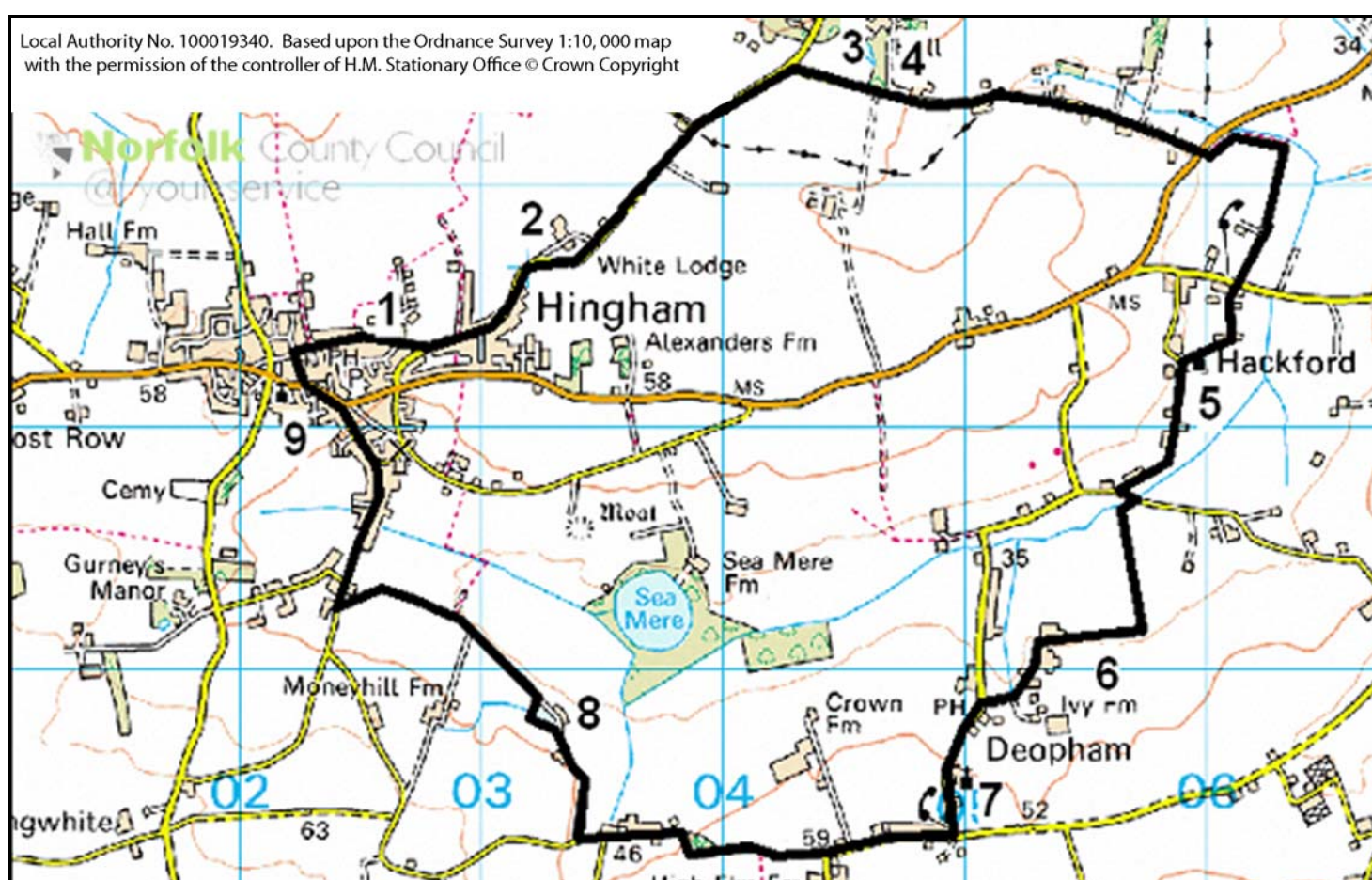
## 4. Possible medieval tofts

Earthworks of possible medieval tofts and small enclosures.

## 5. St Mary's Church, Hackford

The chancel of this church dates to around 1300 but the presence of a Norman doorway which has been reused

Local Authority No. 100019340. Based upon the Ordnance Survey 1:10,000 map with the permission of the controller of H.M. Stationary Office © Crown Copyright



Map of Hingham, Hardingham, Hackford and Deopham Heritage Trail

in the building suggest an earlier church probably stood at the same spot. The nave, west tower and south porch are all constructed in Perpendicular style and bequests for the construction of the tower date from 1423 to 1471. The church is open to the public.

## 6. Medieval tofts and tracks

Earthworks of medieval tofts and tracks. Roman medieval and post medieval pottery has been found here along with brick and tile.

## 7. St Andrew's Church, Deopham

This mainly 14th century church has a very impressive four stage tower. There are traces of an earlier Norman church. In the 13th century the tower was added to this Norman structure, and the nave and aisles were built in the early 14th century. The chancel was added in the late 14th century. The 13th century tower was encapsulated by the four stage

Continued overleaf...